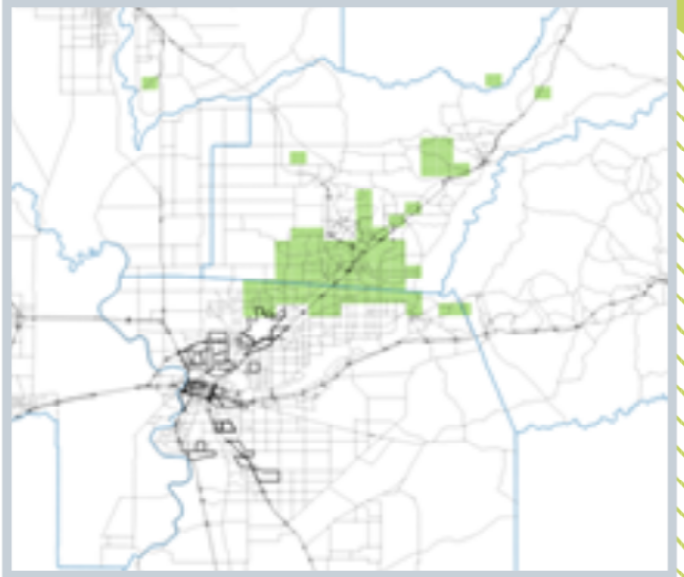


PRIORITY AREAS FOR TREE PLANTING AND OTHER UHI-MEASURES AT THE REGIONAL SCALE

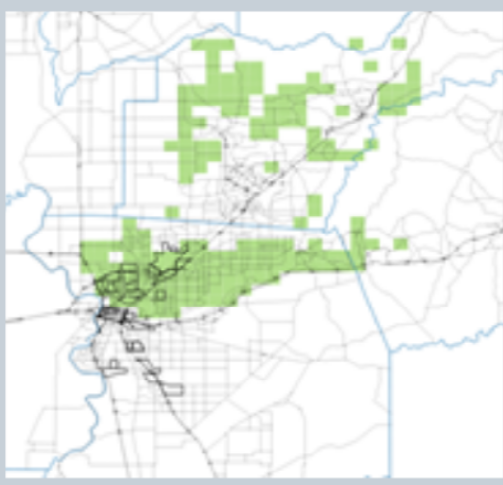
Areas in need of UHI mitigation were ranked using UHI models. Only climate was considered for this ranking, costs and socio-economic factors are omitted.

The utmost priority area is located outside of Sacramento County, it includes an small areas from Roseville, Lincoln, and Auburn.

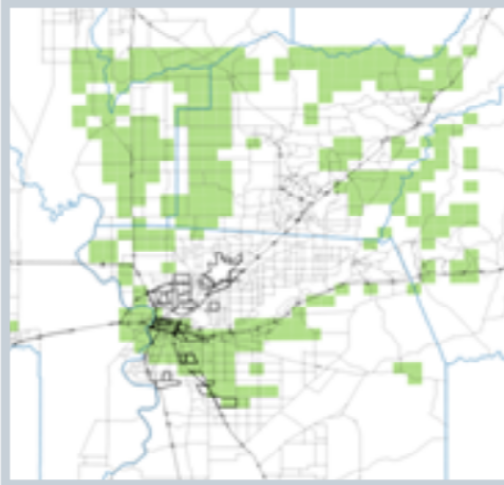
PRIORITY TIER 2 (mitigation most needed)



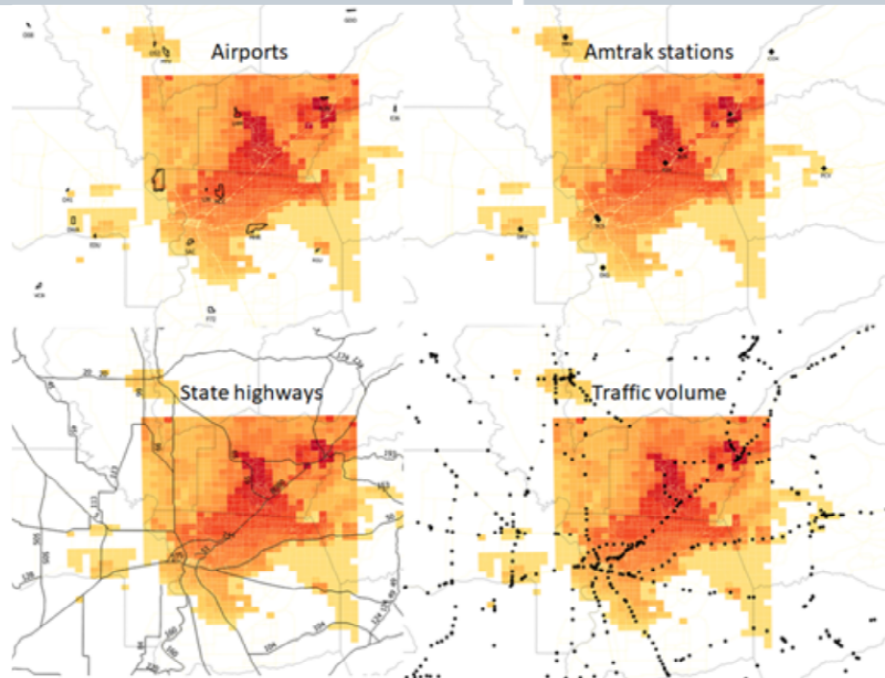
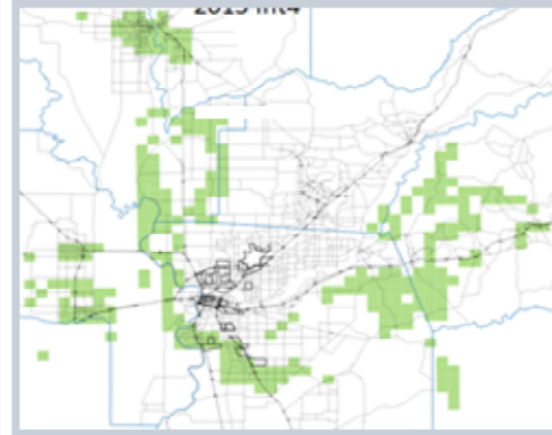
PRIORITY TIER 3



PRIORITY TIER 4



PRIORITY TIER 5



PRIORITY TRANSPIRATION INFRASTRUCTURE (MOST HEAT VULNERABLE TO LEAST)

Airports: AUN, LHM, MCC, L36, SMF, SAC, O52, MYV, RIU, EDU, DWA, PVF, and O41

Amtrak stations: ARN, RLN, RSV, MRV, SAC, SCS, DAV, PCV, and EKG

State highways: 65, 80, 244, 50, and 51

Traffic density: Priorities based closeness of dots compared to the UHI